

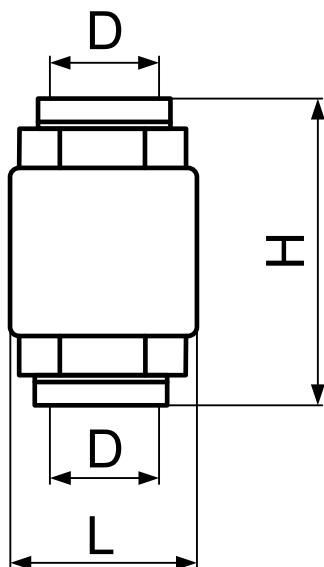
 <b>Dettagli Tecnici</b>	
<b>Corpo:</b>	Ottone CW617N
<b>Molla:</b>	Acciaio INOX AISI 304
<b>Otturatore:</b>	Ottone
<b>Guarnizione:</b>	NBR 70 SH
<b>Temperatura:</b>	0 - 80° C
<b>Pressione Nominale:</b>	1/2" - 1" → PN 20 1"1/4 - 2" → PN 16 2"1/2 - 4" → PN 10

 <b>Technical Details</b>	
<b>Body:</b>	Brass CW617N
<b>Spring:</b>	Stainless Steel AISI 304
<b>Shutter:</b>	Brass
<b>O-ring:</b>	NBR 70 SH
<b>Temperature:</b>	0 - 80° C
<b>Nominal Pressure:</b>	1/2" - 1" → PN 20 1"1/4 - 2" → PN 16 2"1/2 - 4" → PN 10

 <b>Fiche Technique</b>	
<b>Corps:</b>	Laiton CW617N
<b>Ressort:</b>	Acier inoxydable AISI 304
<b>Obturateur:</b>	Laiton
<b>O-ring:</b>	NBR 70 SH
<b>Température:</b>	0 - 80° C
<b>Pression Nominale:</b>	1/2" - 1" → PN 20 1"1/4 - 2" → PN 16 2"1/2 - 4" → PN 10



D	H	L
1/2"	58	34
3/4"	65	42
1"	74	48
1" 1/4	83	61
1" 1/2	93	71
2"	101	87
2" 1/2	122	120
3"	141	140
4"	158	172