

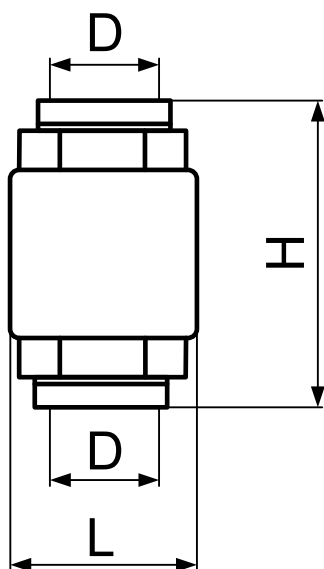
 Dettagli Tecnici	
Corpo:	Ottone CW617N
Molla:	Acciaio INOX AISI 304
Otturatore:	Co-polimero di acetale
Guarnizione:	NBR 70 SH
Temperatura:	0 - 80° C
Pressione Nominale:	1/2" - 1" → PN 20 1"1/4 - 2" → PN 16 2"1/2 - 4" → PN 10

 Technical Details	
Body:	Brass CW617N
Spring:	Stainless Steel AISI 304
Shutter:	Acetal Copolymer
O-ring:	NBR 70 SH
Temperature:	0 - 80° C
Nominal Pressure:	1/2" - 1" → PN 20 1"1/4 - 2" → PN 16 2"1/2 - 4" → PN 10

 Fiche Technique	
Corps:	Laiton CW617N
Ressort:	Acier inoxydable AISI 304
Obturateur:	Co-polymère acétal
O-ring:	NBR 70 SH
Température:	0 - 80° C
Pression Nominale:	1/2" - 1" → PN 20 1"1/4 - 2" → PN 16 2"1/2 - 4" → PN 10



D	H	L
1/2"	47	34
3/4"	53	42
1"	60	47
1" 1/4	66	59
1" 1/2	74	71
2"	80	86
2" 1/2	98	102
3"	103	125
4"	118	154